



SIM7070 Series _TE Kit User Guide

SIMCom Wireless Solutions Limited

Building B, SIM Technology Building, No.633, Jinzhong Road

Changning District, Shanghai P.R.China

Tel: 86-21-31575100

support@simcom.com

www.simcom.com

Document Title:	SIM7070 Series TE kit User Guide
Version:	1.01
Date:	2020-05-13
Status:	Release
Document Control ID:	SIM7070 Series-TE kit User Guide_V1.01

GENERAL NOTES

SIMCOM OFFERS THIS INFORMATION AS A SERVICE TO ITS CUSTOMERS, TO SUPPORT APPLICATION AND ENGINEERING EFFORTS THAT USE THE PRODUCTS DESIGNED BY SIMCOM. THE INFORMATION PROVIDED IS BASED UPON REQUIREMENTS SPECIFICALLY PROVIDED TO SIMCOM BY THE CUSTOMERS. SIMCOM HAS NOT UNDERTAKEN ANY INDEPENDENT SEARCH FOR ADDITIONAL RELEVANT INFORMATION, INCLUDING ANY INFORMATION THAT MAY BE IN THE CUSTOMER'S POSSESSION. FURTHERMORE, SYSTEM VALIDATION OF THIS PRODUCT DESIGNED BY SIMCOM WITHIN A LARGER ELECTRONIC SYSTEM REMAINS THE RESPONSIBILITY OF THE CUSTOMER OR THE CUSTOMER'S SYSTEM INTEGRATOR. ALL SPECIFICATIONS SUPPLIED HEREIN ARE SUBJECT TO CHANGE.

COPYRIGHT

THIS DOCUMENT CONTAINS PROPRIETARY TECHNICAL INFORMATION WHICH IS THE PROPERTY OF SIMCOM WIRELESS SOLUTIONS LIMITED COPYING, TO OTHERS AND USING THIS DOCUMENT, ARE FORBIDDEN WITHOUT EXPRESS AUTHORITY BY SIMCOM. OFFENDERS ARE LIABLE TO THE PAYMENT OF INDEMNIFICATIONS. ALL RIGHTS RESERVED BY SIMCOM IN THE PROPRIETARY TECHNICAL INFORMATION , INCLUDING BUT NOT LIMITED TO REGISTRATION GRANTING OF A PATENT , A UTILITY MODEL OR DESIGN. ALL SPECIFICATION SUPPLIED HEREIN ARE SUBJECT TO CHANGE WITHOUT NOTICE AT ANY TIME.

SIMCom Wireless Solutions Limited

Building B, SIM Technology Building, No.633 Jinzhong Road, Changning District, Shanghai P.R.China

Tel: +86 21 31575100

Email: simcom@simcom.com

For more information, please visit:

<https://www.simcom.com/download/list-863-en.html>

For technical support, or to report documentation errors, please visit:

<https://www.simcom.com/ask/or> email to: support@simcom.com

Copyright © 2020 SIMCom Wireless Solutions Limited All Rights Reserved.

Version History

Date	Version	Description of change	Author
2019-08-16	1.00	Origin	Zhaosen
2020-05-13	1.01	Update document template	Tu Hongjun Tu Hongjun

SIMCom
Confidential

Contents

Version History.....	3
Contents	4
Figure Index.....	5
SCOPE	6
1. Detail description of TE.....	7
2. TE Accessory.....	8
3. Installing TE on SIMCom EVB Board	9
4. TE KIT USB Driver Installation.....	10
5. Using SIMCom Serial Port Tool	12

SIMCom
Confidential

Figure Index

FIGURE 1: TE VIEW.....	7
FIGURE 2: TE ACCESSORY.....	8
FIGURE 3: TE AND SIMCOM-EVB ACCESSORY	9
FIGURE 4: SIM7070 DEVICES RECOGNIZED BY THE OPERATING SYSTEM	10
FIGURE 5: BROWSE FOR THE DRIVERS.....	11
FIGURE 6: ALL DRIVERS INSTALLED	11
FIGURE 7: SIMCOM SERIAL PORT TOOL INTRODUCTION	12

SIMCom
Confidential

SCOPE

THIS DOCUMENT DESCRIBES HOW TO USE SIM7070 Series-TE TO DO TEST; USER CAN GET USEFUL INFO ABOUT THE SIMCOM-EVB QUICKLY THROUGH THIS DOCUMENT.

THIS DOCUMENT IS SUBJECT TO CHANGE WITHOUT NOTICE AT ANY TIME.

NOTE

As SIM7070 Series EVB kit including SIM7070 Series -TE kit + SIMCOM_EVB kit, so customer should refer to this SIM7070 Series -TE kit user guide document and SIMCOM_EVB KIT_User Guide document together.

1. Detail description of TE

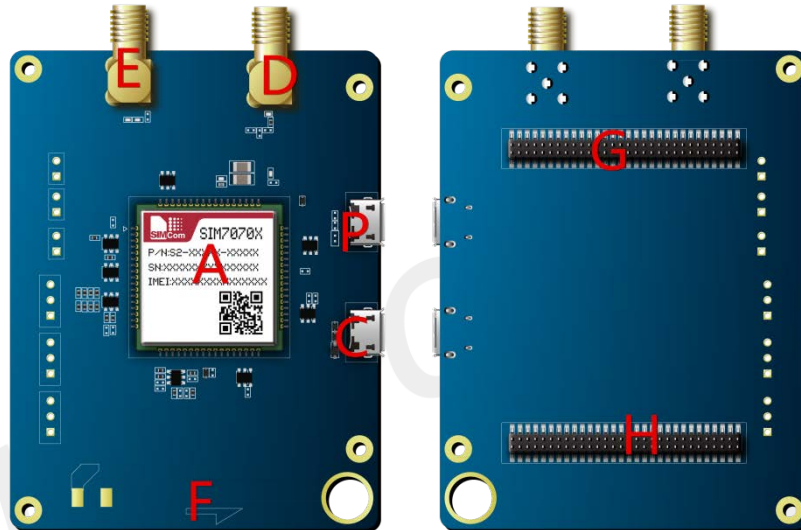


Figure1: TE View

Attachment Label	Description
A	Module
C	Micro USB Connector
D	GNSS Antenna Connector
E	Main Antenna Connector
F	TE module orientation mark (must be the same as the marking direction on SIMCOM-EVB)
G	Connector (Connect to SIMCOM-EVB)
H	Connector (Connect to SIMCOM-EVB)
P	Unused

2. TE Accessory



Figure 2: TE Accessory

Attachment Label	Description	Quantity
M	GNSS Antenna	1
N	Main Antenna	1

NOTE

The main antenna is included in the SIMCOM_EVB KIT.

3. Installing TE on SIMCom EVB Board

TE Kits are compatible with EVB Boards and they fitted like on the following figure.

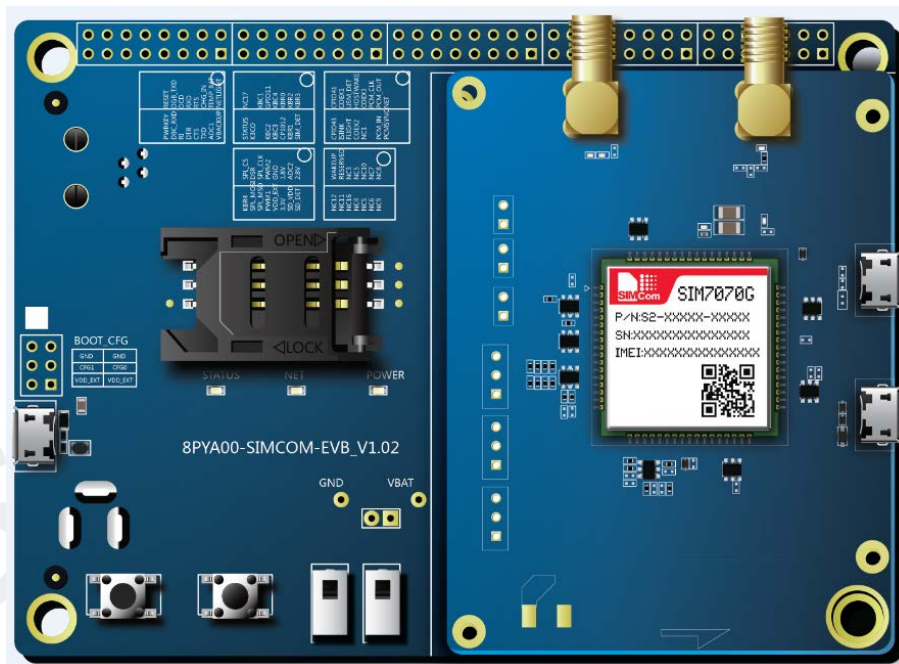


Figure 3: TE and SIMCOM-EVB Accessory

NOTE

When install SIM7070 Series -TE to SIMCOM-EVB, please keep orientation mark (F) aligned on TE and EVB.

4. TE KIT USB Driver Installation

When USB Cable plugged in a PC and connected as shown on the figure TE View – C: Micro USB Port”

There should be several SimTech SIM7070 Series devices listed under other devices in Device manager like the follow figure.

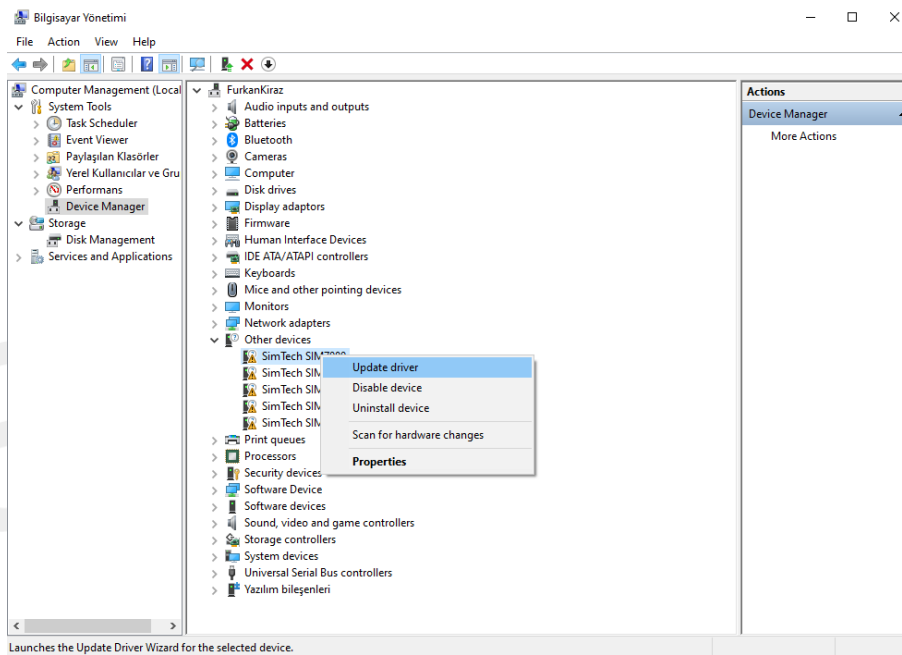


Figure 4: SIM7070 Devices Recognized by the Operating System

Please right click on each of the “SimTech SIM7070” devices and select “Update driver”. Please select “Browse my computer for driver software”. Please click “Browse” and manually search and point to the driver folder “SIM7070_SIM7080 _SIM7090 Series Windows USB Driver_V1.00” and confirm by clicking “Next”.

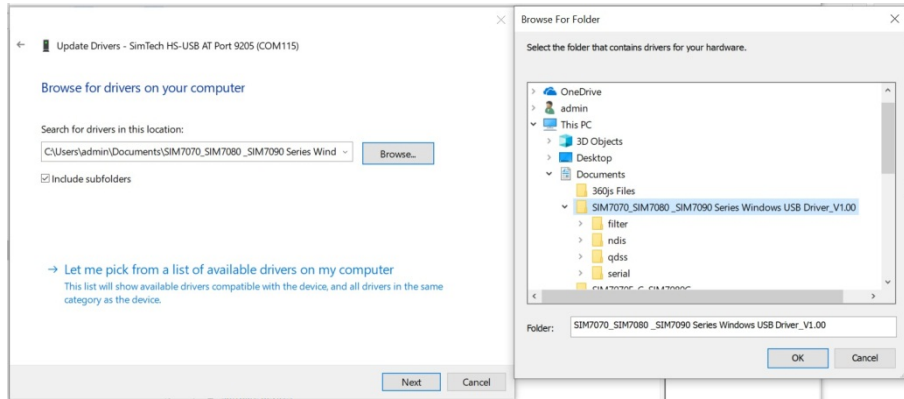


Figure 5: Browse for the drivers

Please repeat same procedure for each of the listed “SimTech 7070” devices under “Other devices” until getting listed three SimTech devices under “Ports (COM & LPT)”, one SimTech device under Modems and one SimTech device under Network Adapters as shown on the figure.

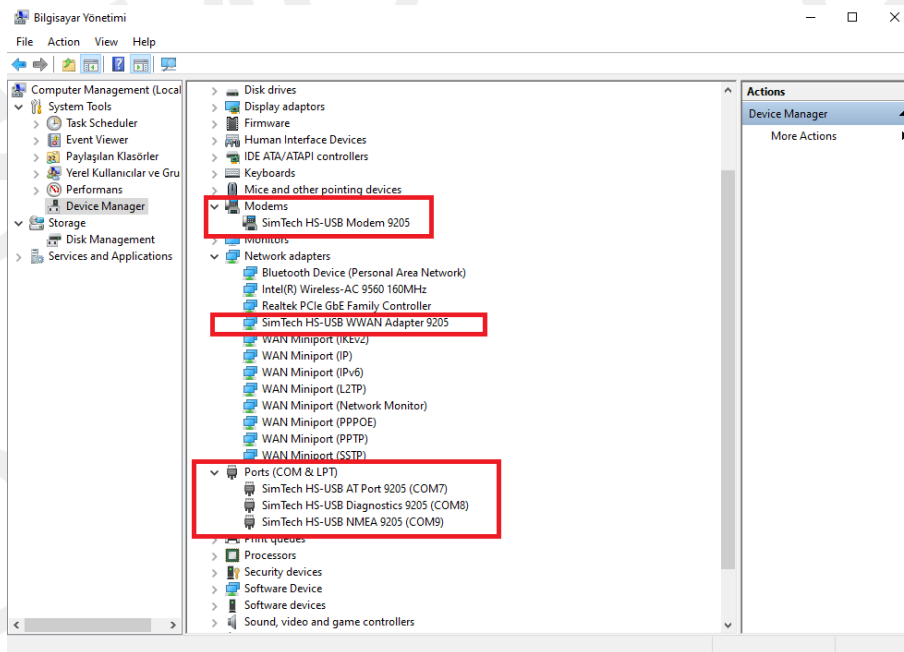


Figure 6: All drivers installed

After driver installs, Ports can use for purposes bellow;

USB Ports	Description
SimTech HS-USB AT Port 9205	AT Command Communication Port
SimTech HS-USB Diagnostics 9205	Software Debug and FW Update Port
SimTech HS-USB NMEA 9205	GNSS NMEA Output Port

5. Using SIMCom Serial Port Tool

SIMCom has a serial port tool to test modules with AT Commands. Serial Port Tool can communicate with modules after opening COM Ports on list. On following figure, every section of serial tool can be seen.

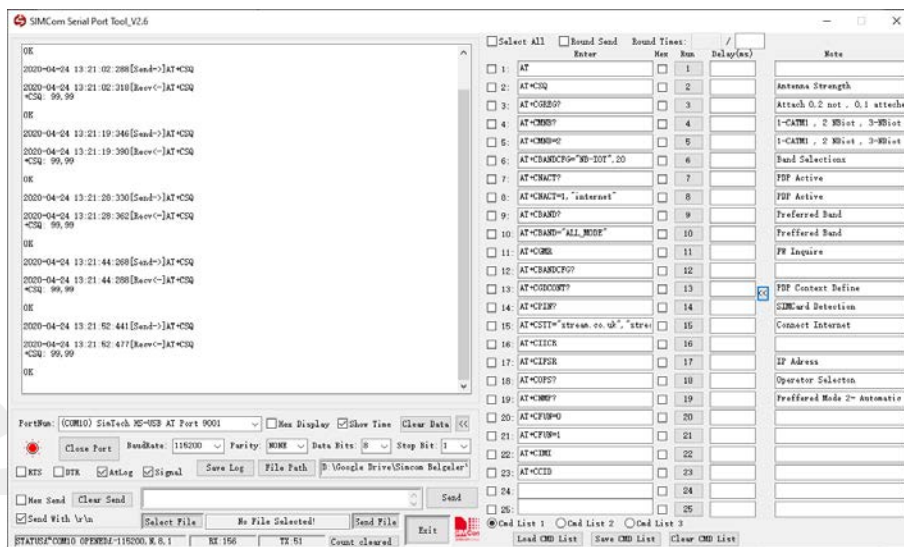


Figure 7: SIMCom Serial Port Tool Introduction

Also, SIMCom Serial Port Tool may take some log records and save these command lists to use later again. Tool has a 3 CMD List sections and holds AT Commands with their notes and saves under .ini format on PC to import it back.

NOTE

Driver: SIM7070_SIM7080_SIM7090 Series Windows Driver_V1.00 and Serial Port Tool: SIMCom Serial Port Tool_V2.6 obtained from local agents or SIMCom FAE.